



REPLACEMENT

**SMALL BASKET**  
art.322201  
Ø 44 mm  
1.73 in

**LARGE BASKET**  
art.322202  
Ø 83 mm  
3.27 in

**DART BASKET**  
art.3225  
Ø 34 mm  
1.33 in

**POLE TIP**  
art.3414

**WINTER BASKET**  
art.3413  
(for art.3410, art.3411 and art.3412)

2 min  
100° C  
(212° F)

glue colla

**FOLDED POLES:**

**TOP MID SEGMENTS**

**LOW SEGMENTS**

**TOP MID AND LOW SEGMENTS**

**TELESCOPIC POLES (ALU FAST LOCK):**

**TELESCOPIC POLES (ROTATING LOCK):**

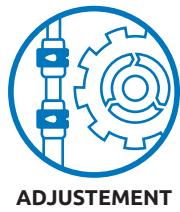


**LEASH ADJUSTMENT**



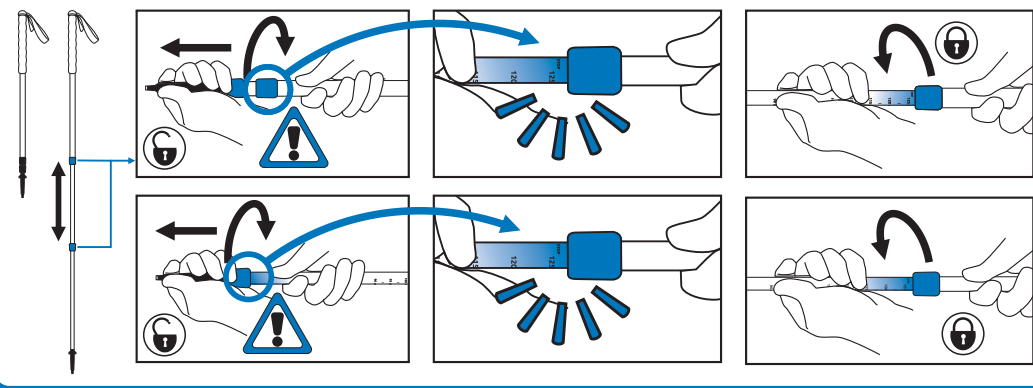
CARE

**DRY BEFORE STORAGE**

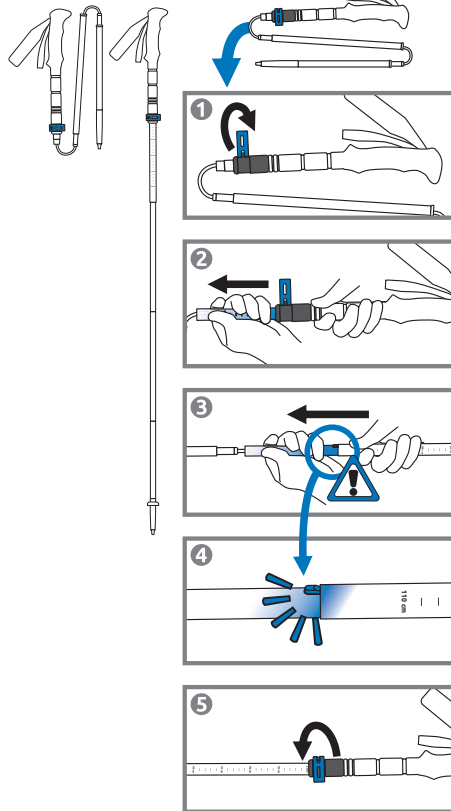


ADJUSTEMENT

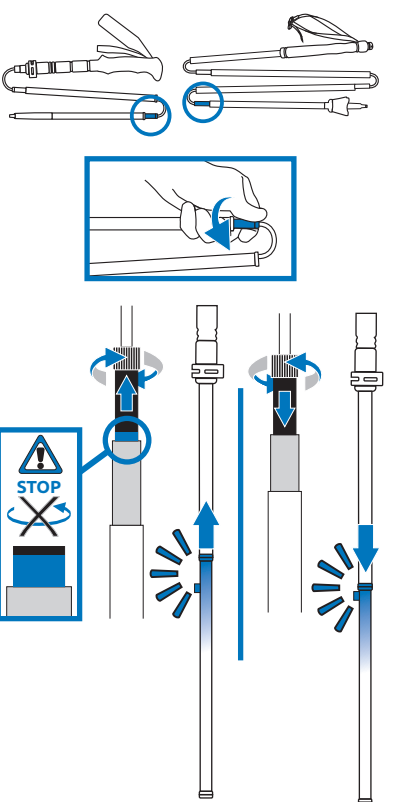
### TELESCOPIC POLES (ROTATING LOCK):



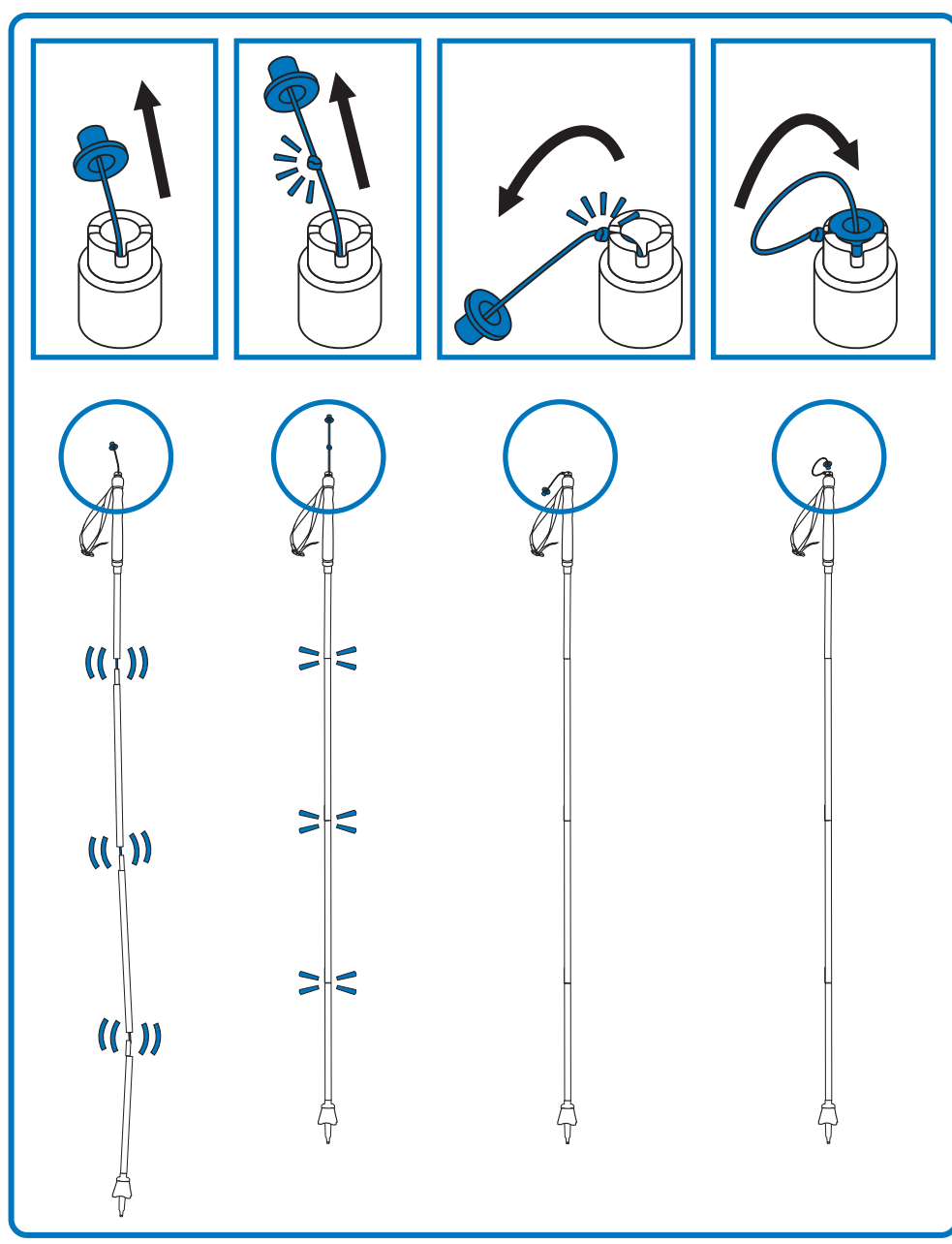
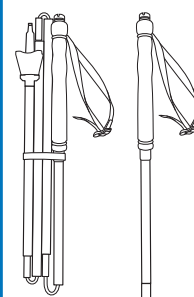
### FOLDED POLES:



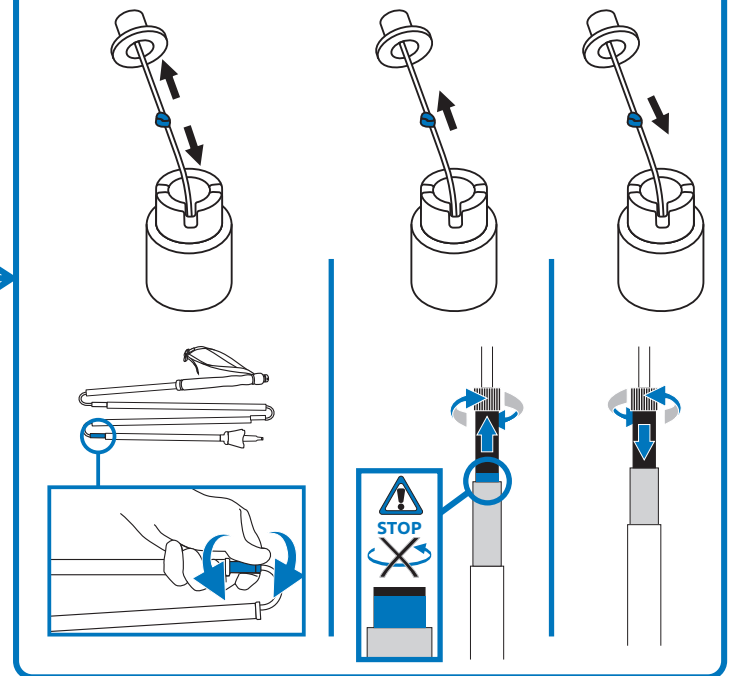
### MICRO REGOLAZIONE • MICRO-ADJUSTMENT MICRO-AJUSTEMENT



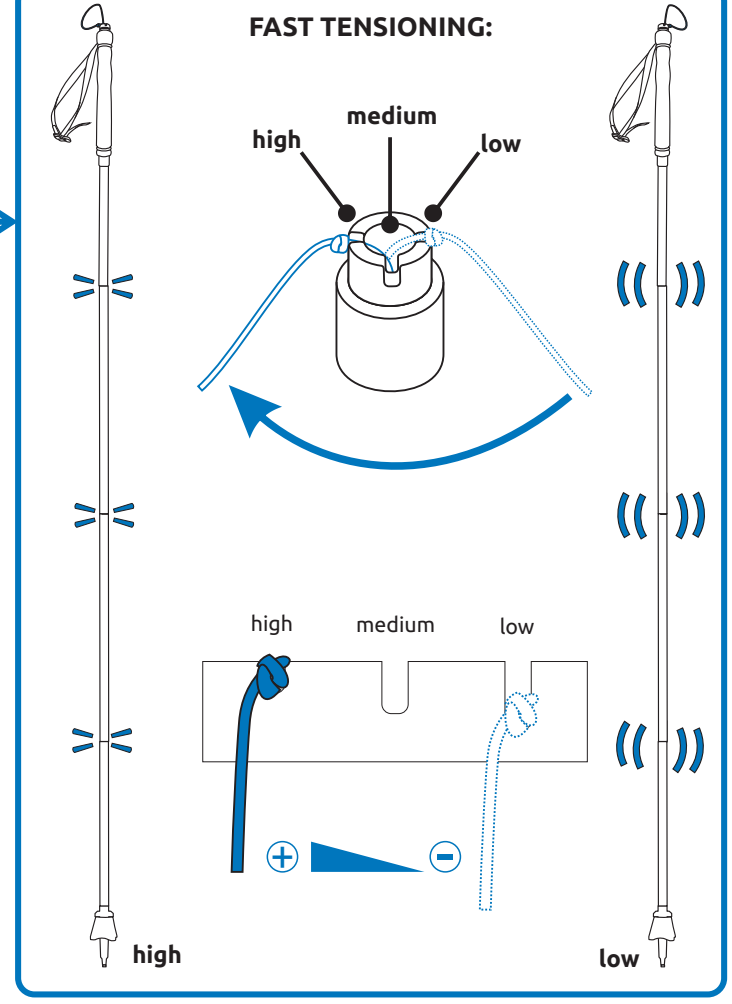
### XENON POLES:



### CORD TENSIONING:



### FAST TENSIONING:



### TELESCOPIC POLES (ALU FAST LOCK):

